



# XC60



# YOUR XC60 IS YOUR HOME AWAY FROM HOME. GIVE IT YOUR SIGNATURE.

## PERSONALISE YOUR INTERIOR

Choose an XC60 and you'll enjoy an elegantly designed cabin as standard, with a superior finish in evidence everywhere you look – from the silk metal finish on our air vents to the fine cloth surfaces on the door pillars. Our Comfort seats can be ordered in Lomma textile, Eriksberg T-Tec/textile or leather, while our new Sport seats in leather give you

legendary Volvo comfort while also keeping you firmly in place in those fast corners. Choose our heated three-spoke steering wheel and you can gently warm your hands on cold mornings. There's a brand new easy-to-read Analogue Instrument Cluster or if you prefer, try our new Adaptive Digital Display.



Our Inscription offer consists of a palette of luxurious options, which you can combine in your own way, giving you the opportunity to truly design your car around your own taste. The Inscription Linear Walnut console has a symmetrical V-shaped fishbone pattern where the grain meets in the middle. It's this level of design detail that gives the Inscription

range its sophistication. Other touches include our Inscription Leather Instrument panel and our stunning Inscription Charcoal headliner in the roof interior.



We upholster our Inscription seats with the finest soft leather by luxury leather specialists Bridge of Weir. Minimal surface treatment means the leather is wonderfully soft and durable.

UPHOLSTERIES – INSCRIPTION SOFT LEATHER



Inscription Soft Leather, GF60  
Offblack in Anthracite Black interior with Inscription Charcoal headlining



Inscription Soft Leather, GF6J,  
Toscana Tan in Anthracite Black  
interior with Inscription Charcoal  
headlining



Inscription Soft Leather, GF6S,  
Marble White in Anthracite Black  
interior with Inscription Charcoal  
headlining



Inscription Soft Leather, GF1B,  
Soft Beige in Sandstone Beige  
interior with Soft Beige headlining



Inscription Soft Leather, GF1V,  
Marble White in Sandstone Beige  
interior with Soft Beige headlining

UPHOLSTERIES – SPORT LEATHER



Sport Leather, G361  
Offblack in Anthracite Black interior with Inscription Charcoal headlining



Sport Leather, G301  
Offblack in Anthracite Black interior  
with Quartz headlining



Sport Leather, G36M  
Hazel Brown/Offblack in Anthracite  
Black interior with Inscription  
Charcoal headlining



Sport Leather, G30M  
Hazel Brown/Offblack in Anthracite  
Black interior with Quartz  
headlining



Sport Leather, G36G  
Blond/Offblack in Anthracite Black  
interior with Inscription Charcoal  
headlining



Sport Leather, G30G  
Blond/Offblack in Anthracite Black  
interior with Quartz headlining



Sport Leather, G36B  
Soft Beige in Anthracite Black  
interior with Inscription Charcoal  
headlining

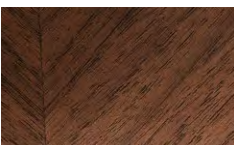


Sport Leather, G30B  
Soft Beige in Anthracite Black  
interior with Soft Beige headlining

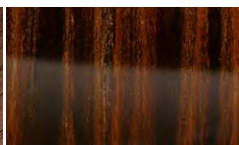


Sport Leather, G312  
Soft Beige in Sandstone Beige  
interior with Soft Beige headlining

INLAYS



Inscription Linear Walnut



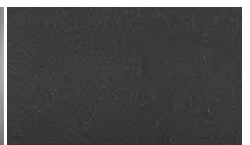
Urbane Wood



Copper Dawn



Shimmer Graphite  
aluminium



Charcoal



Leather, G701  
Offblack in Anthracite Black interior with Quartz headlining



Leather, G761  
Offblack in Anthracite Black interior with Inscription Charcoal headlining



Leather, G70B  
Soft Beige in Anthracite Black interior with Soft Beige headlining



Leather, G76B  
Soft Beige in Anthracite Black interior with Inscription Charcoal headlining



Leather, G71B  
Soft Beige in Sandstone Beige interior with Soft Beige headlining

UPHOLSTERIES – ERIKSBERG T-TEC/TEXTILE



Eriksberg T-Tec/textile, G601  
Charcoal/Offblack in Anthracite Black interior with Quartz headlining



Eriksberg T-Tec/textile, G661  
Charcoal/Offblack in Anthracite Black interior with Inscription Charcoal headlining



Eriksberg T-Tec/textile, G61B  
Soft Beige in Sandstone Beige interior with Soft Beige headlining

UPHOLSTERY – LOMMA TEXTILE



Lomma Textile, G001  
Charcoal in Anthracite Black interior with Quartz headlining



Titania, 8x20", Diamond Cut/Glossy Black



Inscription Avior, 8x20"  
Silver Bright



Candor, 8x20"  
Diamond Cut/Matte Black



Candor, 8x20"  
Diamond Cut/Matte Iron Stone



Talitha, 8x20"  
Diamond Cut/Matte Silver Stone



Talitha, 8x20"  
Diamond Cut/Matte Dark Grey



Talitha, 8x20"  
Diamond Cut/Glossy Black



Fenrir, 8x19"  
Black Chrome



Freja, 8x18"  
Diamond Cut/Matte Dark Grey



Freja, 8x18"  
Diamond Cut/Light Light Grey



Merac, 7.5x18"  
Glossy Black



Pan, 7.5x18"  
Silver Bright



Zephyrus, 7.5x18"  
Diamond Cut/Matte Tech Black



Valder, 7.5x17"  
Diamond Cut/Titanium Grey



Valder, 7.5x17"  
Silver



Segin, 7.5x17"  
Silver



# MATCH YOUR XC60 TO YOUR LIFE.

ACCESSORIES

VOLVO XC60 | 28

The most pleasurable part of buying a new Volvo is putting your personal stamp on it. You can do that by choosing accessories that reflect your own taste and that cater to your particular lifestyle. If, for example, you take long driving holidays with family on board you'll love our Rear Seat Entertainment system. Since it has two 8-inch touch screens and DVD players, and is compatible with mp3-players and SD cards, it might be one of the best investments you make this year.

FIND MORE ACCESSORIES ON [VOLVOCARS.COM](http://VOLVOCARS.COM)



#### YOUR CAR, YOUR STYLE

To give your XC60 a more unique profile, we've developed Exterior Styling Accessories that reinforce your car's dynamic stance. They're available in Matte Silver or Matte Iron Stone.



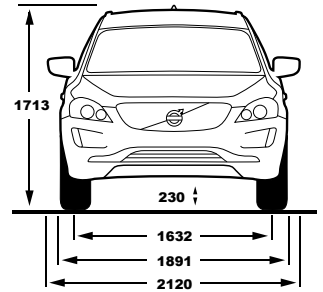
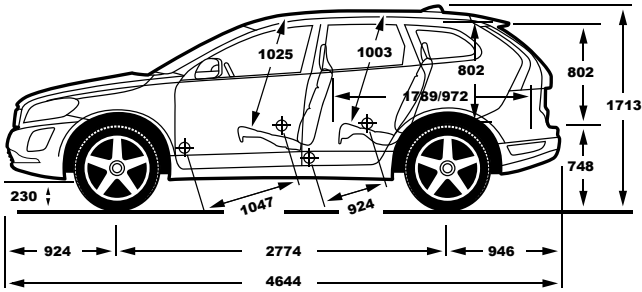
#### MAKE A BOLD STATEMENT

Choose a rugged rear skid plate, neatly faired-in exhaust pipes, a front skid plate or integrated running boards. These imposing 20" Candor wheels pictured here are available in Diamond Cut/Matte Black or Diamond Cut/Matte Iron Stone.

#### PARK ASSIST CAMERA, FRONT BLIND VIEW

There is nothing more challenging than trying to negotiate tight exits and junctions, which often have restricted visibility. We aim to make that easier for you with our Parking Assistance Camera, Front Blind View, which allows you to 'see around corners' with a 180° field of vision.



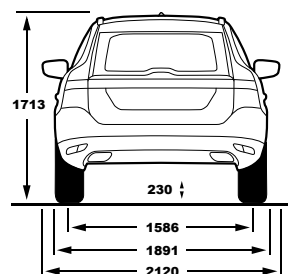
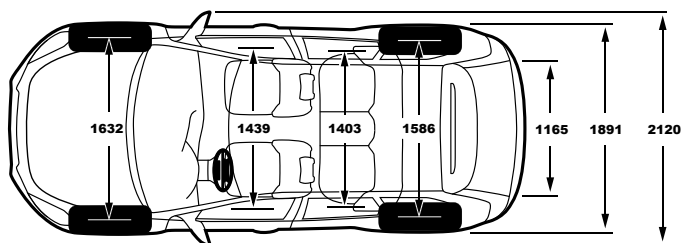


	T6 AWD	T6
Engine type:	3.0L I6 petrol twin-scroll turbo	2.0L I4 petrol supercharged/turbo
Transmission:	Six-speed Geartronic	Eight-speed Geartronic
Fuel consumption, litres/100 km, mixed cycle, man/auto:	-/10.7	-/7.3
CO <sub>2</sub> g/km, man/auto:	-/249	-/169
Max. power output, kW (hp) at rpm:	224 (304) 5600	225 (306) 5700
Max. torque, Nm at rpm:	440/2100-4200	400/2100-4500
Acceleration, 0-100 km/h in sec, man/auto:	-/6.9	-/6.9
Top speed, km/h, man/auto:	-/210	-/210
Fuel tank, litres:	70	70
Environmental classification:	Euro 5 (2011)	Euro 6

	T5
Engine type:	2.0L I4 petrol turbo
Transmission:	Eight-speed Geartronic
Fuel consumption, litres/100 km, mixed cycle, man/auto:	-/6.7
CO <sub>2</sub> g/km, man/auto:	-/157
Max. power output, kW (hp) at rpm:	180 (245) 5500
Max. torque, Nm at rpm:	350/1500-4800
Acceleration, 0-100 km/h in sec, man/auto:	-/7.2
Top speed, km/h, man/auto:	-/210
Fuel tank, litres:	70
Environmental classification:	Euro 6



FIND OUT MORE ON  
VOLVOCARS.COM



	D5 AWD	D4 AWD
Engine type:	2.4L I5 common-rail twin-turbodiesel	2.4L I5 common-rail twin-turbodiesel
Transmission:	Six-speed manual or Six-speed Geartronic	Six-speed manual or Six-speed Geartronic
Fuel consumption, litres/100 km, mixed cycle, man/auto:	5.3/6.4	5.3/6.4
CO <sub>2</sub> g/km, man/auto:	139/169	139/169
Max. power output, kW (hp) at rpm:	158 (215) 4000	133 (181) 4000
Max. torque, Nm at rpm:	420 (440 auto)/1500–3250 (3000 auto)	420/1500–2500
Acceleration, 0–100 km/h in sec, man/auto:	8.1/8.3	9.8/10.2
Top speed, km/h, man/auto:	210/205	200/195
Fuel tank, litres:	70	70
Environmental classification:	Euro 5 (2011)	Euro 5 (2011)

	D4	D3
Engine type:	2.0L I4 common-rail turbodiesel	2.0L I5 common-rail turbodiesel
Transmission:	Six-speed manual or Eight-speed Geartronic	Six-speed manual or Six-speed Geartronic
Fuel consumption, litres/100 km, mixed cycle, man/auto:	4.5/4.7	5.3/6.0
CO <sub>2</sub> g/km, man/auto:	117/124	139/159
Max. power output, kW (hp) at rpm:	133 (181) 4250	100 (136) 3500
Max. torque, Nm at rpm:	400/1750–2500	350/1500–2250
Acceleration, 0–100 km/h in sec, man/auto:	8.5/8.5	11.2/11.2
Top speed, km/h, man/auto:	210/210	190/185
Fuel tank, litres:	70	70
Environmental classification:	Euro 6	Euro 5 (2011)

**NB.** The engine programme may vary from country to country. All technical data may be subject to change. Please ask your Volvo dealer for further information.

Upgrade your XC60's performance with a Polestar Performance software. Polestar are our racing partners. We've been using their expertise on the track to help us continually improve our engines' efficiency and performance.

[FIND OUT MORE ON POLESTAR.COM](http://FIND_OUT_MORE_ON_POLESTAR.COM)

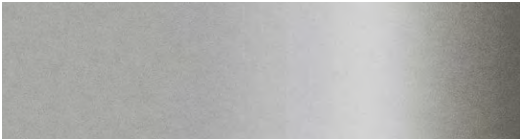
**Please note:** Some of the information in this brochure may be incorrect due to changes in product specifications that may have occurred since printing. Some of the equipment described or shown may now only be available at extra cost. Before ordering, please ask your Volvo dealer for the latest information. The manufacturer reserves the right to make changes at any time and without notice to prices, colours, materials, specifications and models.



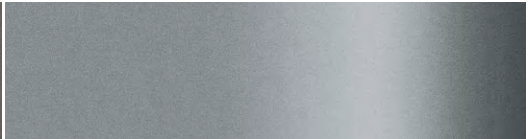
707 Inscription Crystal White Pearl  
(Also available for R-Design)



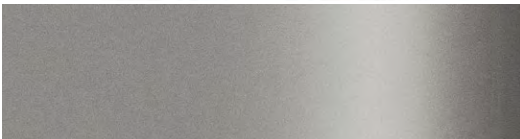
614 Ice White  
(Also available for R-Design)



711 Bright Silver metallic



477 Inscription Electric Silver metallic  
(Also available for R-Design)



484 Seashell metallic



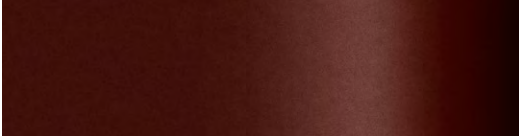
498 Caspian Blue metallic



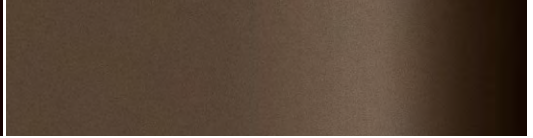
612 Passion Red  
(Only available for R-Design)



702 Flamenco Red metallic



712 Rich Java metallic  
(Also available for R-Design)



700 Twilight Bronze metallic



492 Savile Grey metallic  
(Also available for R-Design)



452 Black Sapphire metallic  
(Also available for R-Design)



019 Black Stone

**Please note:** It's not possible to reproduce exact original shades in printed matter. Please ask your dealer to show you samples.



VOLVO XC60